

Description

The Compact **Power-D-Box®** is highly attractive due to its installation height of only one rack unit (44.45 mm). This saves valuable height units in the IT rack, which are required for active technology. The pluggable 8340-F hydraulic-magnetic circuit breakers can be used with the different models. This helps achieve maximum power distribution with minimum space requirements. Besides various preferred types, we can offer individual solutions, perfectly tailored to your application.



Compact Power-D-Box®

Features

- 19" power distribution system, made of aluminium
- Voltage rating DC 48 V, 65 V, 80 V (depending on version)
- Minus pole protected
- Total current depending on version up to 150 A
- Load up to 40 A per circuit breaker (depending on version)
- Live pluggable, temperature independent circuit breakers

Your benefits

- Minimum space requirement in the IT rack through 1HU housing
- Easy mounting in 19" or ETSI system cabinets via reversible flange
- Easy system expansion without downtime thanks to pluggable circuit protectors

Preferred types

Preferred types are E-T-A products which are most frequently used by our customers.

These preferred types are favourably priced and have shorter lead times than other product versions.

Preferred types	Short description
PDB-1-N-8340-8E-B0-RR	Load current max. 30 A, non-redundant supply, 1 x 8 circuit breakers
PDB-1-N-8340-2P-4R-B0-RR	Load current max. 40 A, redundant supply, 2 x 2 circuit breakers (2-pole)

Compliance



Technical data PDB-1-N-8340-8E-B0-RR

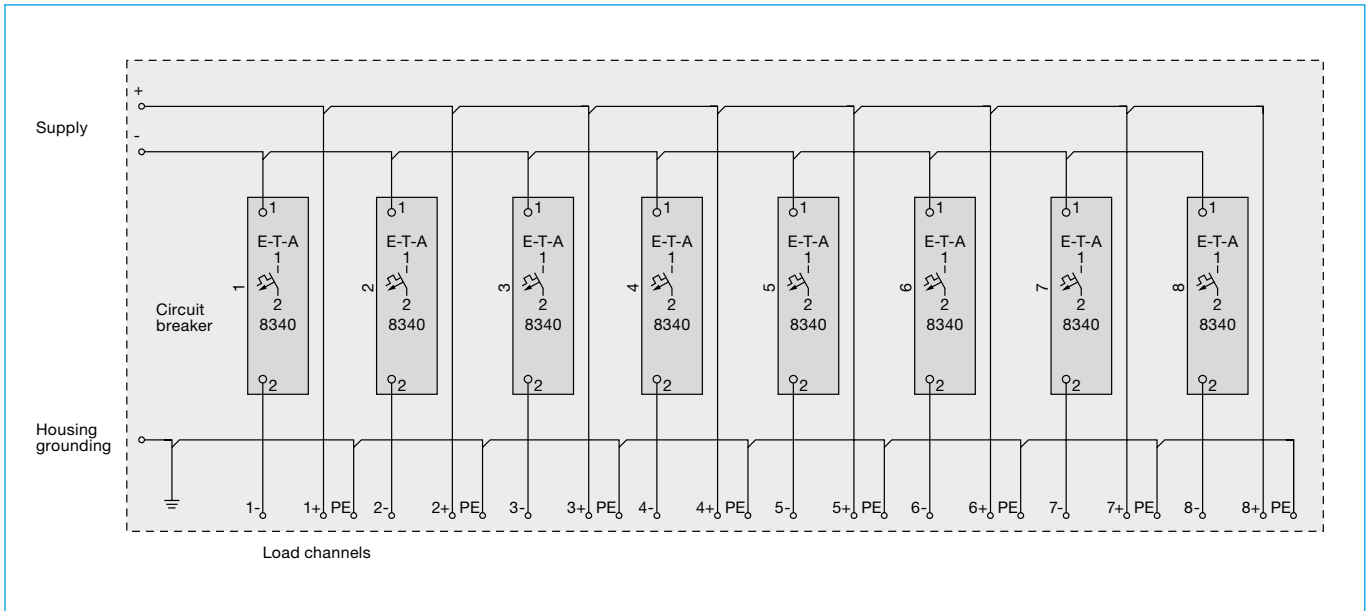
General data

Rated voltage	Max. DC 60 V
Protected pole	Minus
Circuit breakers/ circuit protectors	8335 or 8340-F plug-in type circuit breakers 8335-F410-P1M1-K800000-1A ... 30 A 8340-F410-P1M1-KNH0-0.02 A ... 30 A
Number of loads	1 x 8
Redundancy	Non-redundant system
Compliance	EN 60950-1 / EN 62368-1
Operating temperature range	-30 ... +55 °C
Housing	
Material	Aluminium
Dimensions	Width: 482.6 mm (19" mounting); Height: 44.45 mm (1 HU); Installation depth: 230 mm
Mounting method	19" / ETSI (21")
Cable grip	Pre-mounted
Mass	2.0 kg
Grounding	8 x M5 for load outputs 1 x M6 for supply

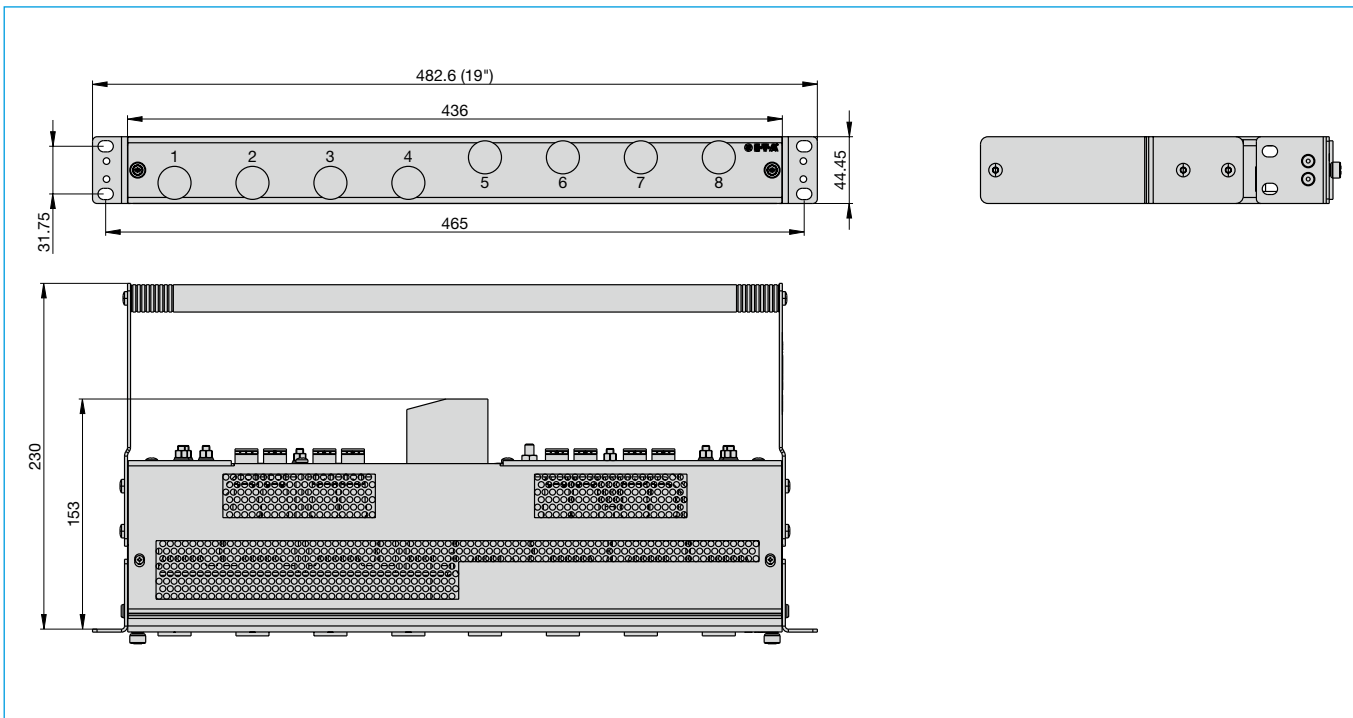
Technical data PDB-1-N-8340-8E-B0-RR

Tightening torque	M5: Max. 5.9 Nm M6: Max. 3.5 Nm
Supply	
Total current per supply	Max. 150 A per supply
Cable entry	Cable entry at the rear
Terminal design	Screw terminals
Cable cross section	10 mm ² – 50 mm ² flexible with wire end ferrule 16 mm ² – 50 mm ² flexible without wire end ferrule
Tightening torque	6 - 8 Nm
Load channels	
Current rating per load channel	max. 30 A
Cable entry	Cable entry at the rear
Terminal design	Plug-in type screw terminals
Cable cross section	0.25 mm ² – 4 mm ² flexible with wire end ferrule and plastic sleeve 0.25 mm ² – 6 mm ² flexible with wire end ferrule, without plastic sleeve or rigid cables
Tightening torque	≤ 4 mm ² : 0.5 Nm to 0.6 Nm, > 4 mm ² : 0.7 Nm to 0.8 Nm

Schematic diagram



Dimensions



All information and data given on our products are accurate and reliable to the best of our knowledge, but E-T-A does not accept any responsibility for the use in applications which are not in accordance with the present specification. E-T-A reserves the right to change specifications at any time in the interest of technical improvement. Dimensions are subject to change without notice. Please enquire for the latest dimensional drawing with tolerances if required. All dimensions, data, pictures and descriptions are for information only and are not binding. Amendments, errors and omissions excepted. Ordering codes of the products may differ from their marking.

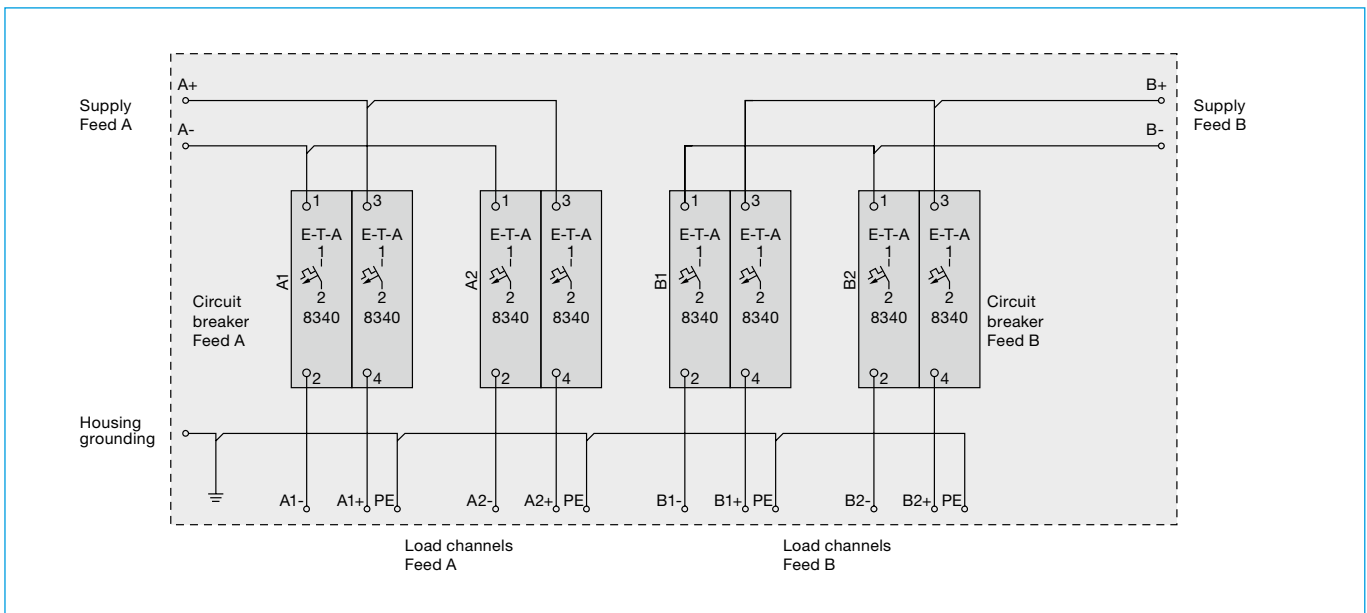
Technical data PDB-1-N8340-2P-4R-B0-RR

General data	
Rated voltage	Max. DC 80 V
Protected pole	Plus and Minus
Circuit breakers/ circuit protectors	8335 or 8340-F plug-in type circuit breakers: 8335-F420-P1M1-B800000-... A (without auxiliary contact) 8340-F420-P1M1-ANH0-... A (without auxiliary contact)
Number of loads	2 x 2
Redundancy	Redundant system
Compliance	EN 60950-1 / EN 62368-1
Operating temperature range	-30 ... +55 °C
Housing	
Material	Aluminium
Dimensions	Width: 482.6 mm (19" mounting); Height: 44.45 mm (1 HU); Installation depth: 288mm
Mounting method	19" / ETSI (21")
Cable grip	Pre-mounted
Mass	1.9 kg
Grounding	1 x M6 for supply 4 x M6 for load outputs

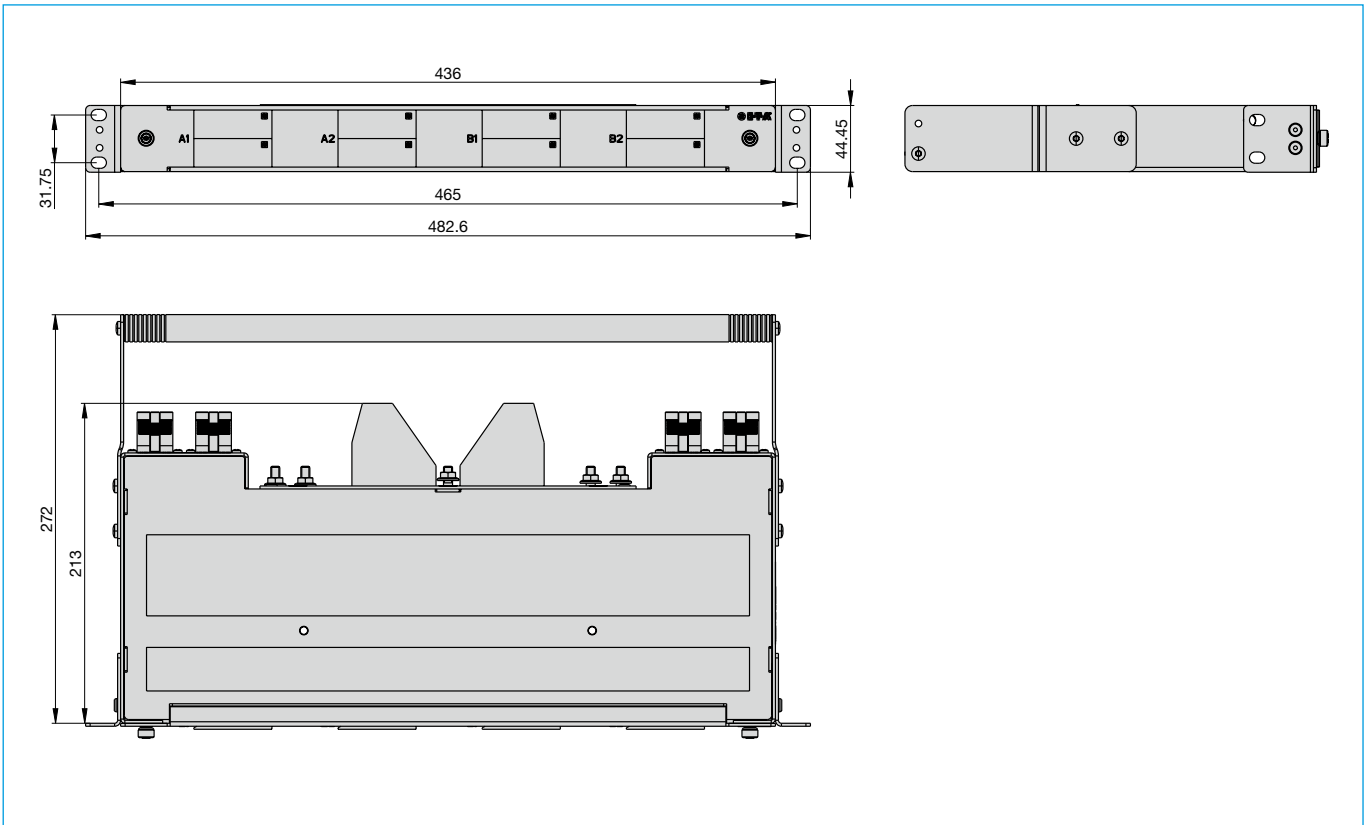
Technical data PDB-1-N8340-2P-4R-B0-RR

Tightening torque	M6: Max. 5.9 Nm
Supply	
Total current per supply	Max. 80 A per supply
Cable entry	Cable entry at the rear, on the side
Terminal design	Screw terminals
Cable cross section	10 mm ² – 50 mm ² flexible with wire end ferrule 16 mm ² – 50 mm ² flexible without wire end ferrule
Tightening torque	6 - 8 Nm
Load channels	
Current rating per load channel	max. 40 A
Cable entry	Cable entry at the rear
Terminal design	Plug-in type spring-loaded terminals with latching mechanism
Cable cross section	0.5 mm ² – 10 mm ² (single conductor or stranded fine wire)

Schematic diagram

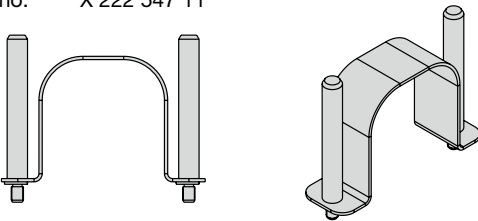


Dimensions



Accessories

Withdrawal tool
(circuit breaker types 8340-F)
no. X 222 547 11



All information and data given on our products are accurate and reliable to the best of our knowledge, but E-T-A does not accept any responsibility for the use in applications which are not in accordance with the present specification. E-T-A reserves the right to change specifications at any time in the interest of technical improvement. Dimensions are subject to change without notice. Please enquire for the latest dimensional drawing with tolerances if required. All dimensions, data, pictures and descriptions are for information only and are not binding. Amendments, errors and omissions excepted. Ordering codes of the products may differ from their marking.