



EC5SBW Series Application Note V15

ISOLATED DC-DC CONVERTER EC5SBW SERIES APPLICATION NOTE



Approved By:

Department	Approved By	Checked By	Written By
Research and Development Department	Jacky	Astray	Joe/Sean
Design Quality Department	Benny	JoJo	



EC5SBW Series Application Note V15

Contents

1. Introduction	3
2. Pin Function Description	3
3. Connection for Standard Use	4
4. Test Set-Up	4
5. Recommend Layout, PCB Footprint and Soldering Information.....	4
6. Features and Functions	5
6.1 UVLO (Under Voltage Lock Out)	5
6.2 Over Current / Short Circuit Protection	5
6.3 Output Over Voltage Protection	6
6.4 Over Temperature Protection.....	6
6.5 Remote On/Off	6
6.6 Output Voltage Adjustment	7
7. Input / Output Considerations	8
7.1 Input Capacitance at the Power Module	8
7.2 Output Ripple and Noise	8
7.3 Output Capacitance	9
8. Thermal Design.....	10
8.1 Operating Temperature Range	10
8.2 Convection Requirements for Cooling	10
8.3 Thermal Considerations	10
8.4 Power Derating	10
8.5 1"x1" Case Heat Sinks Kit:	12
9. Safety & EMC	13
9.1 Input Fusing and Safety Considerations	13
9.2 EMC Considerations	13



EC5SBW Series Application Note V15

1. Introduction

The EC5SBW series of DC-DC converters offers 30 watts of output power @ output voltages of 3.3, 5, 12, 15, ± 12 , ± 15 VDC with industry 1.0"x1.0"x0.4" package. It has a wide (4:1) input voltage range of 9 to 36VDC (24VDC nominal), 18 to 75VDC (48VDC nominal) and 1500VDC isolation.

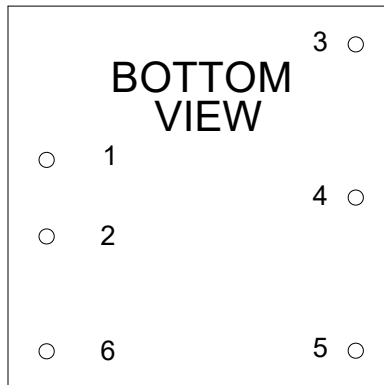
High efficiency up to 90%, allowing case operating temperature range of -40°C to 105°C (except M2 Series -55°C to 105°C). Very low no load power consumption (10mA), an ideal solution for energy critical systems.

Fully protected against input UVLO (under voltage lock out), output over-current, output over-voltage, over-temperature and continuous short circuit conditions.

The standard control functions include remote on/off (positive or negative) and +10%, -10% adjustable output voltage (single output only).

EC5SBW series is designed suitable for distributed power architectures, telecommunications, battery operated equipment, industrial and mobile equipment application.

2. Pin Function Description



Single Output

No	Label	Function	Description	Reference
1	+Vin	+V Input	Positive Supply Input	Section 7.1
2	-Vin	-V Input	Negative Supply Input	Section 7.1
3	+Vout	+V Output	Positive Power Output	Section 7.2/7.3
4	Trim	Trim	External Output Voltage Adjustment	Section 6.6
5	-Vout	-V Output	Negative Power Output	Section 7.2/7.3
6	Remote	Remote On/Off	External Remote On/Off Control	Section 6.5

Dual Output

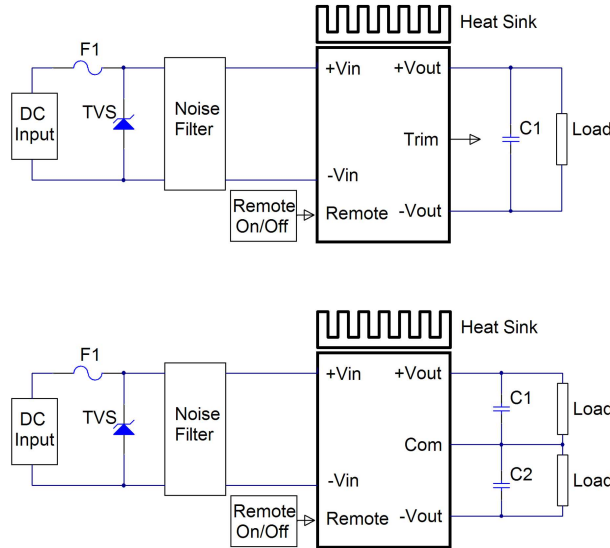
No	Label	Function	Description	Reference
1	+Vin	+V Input	Positive Supply Input	Section 7.1
2	-Vin	-V Input	Negative Supply Input	Section 7.1
3	+Vout	+V Output	Positive Power Output	Section 7.2/7.3
4	Com	Common	Common Power Output	Section 7.2/7.3
5	-Vout	-V Output	Negative Power Output	Section 7.2/7.3
6	Remote	Remote On/Off	External Remote On/Off Control	Section 6.5



EC5SBW Series Application Note V15

3. Connection for Standard Use

The connection for standard use is shown below. External output capacitors (C1, C2) are recommended to reduce output ripple and noise, 1uF ceramic capacitor for all models.



Symbol	Component	Reference
F1, TVS	Input fuse, TVS	Section 9.1
C1, C2	External capacitor on the output side	Section 7.3
Noise Filter	External input noise filter	Section 9.2
Remote On/Off	External remote on/off control	Section 6.5
Trim	External output voltage adjustment	Section 6.6
Heat sink	External heat sink	Section 8.1/8.2/8.3/8.4/8.5

4. Test Set-Up

The basic test set-up to measure parameters such as efficiency and load regulation is shown below. When testing the modules under any transient conditions please ensure that the transient response of the source is sufficient to power the equipment under test. We can calculate:

- Efficiency
- Load regulation and line regulation

The value of efficiency is defined as:

$$\eta = \frac{V_o \times I_o}{V_{in} \times I_{in}} \times 100\%$$

Where:

V_o is output voltage

I_o is output current

V_{in} is input voltage

I_{in} is input current

The value of load regulation is defined as:

$$Load\ reg. = \frac{V_{FL} - V_{NL}}{V_{NL}} \times 100\%$$

Where:

V_{FL} is the output voltage at full load

V_{NL} is the output voltage at no load

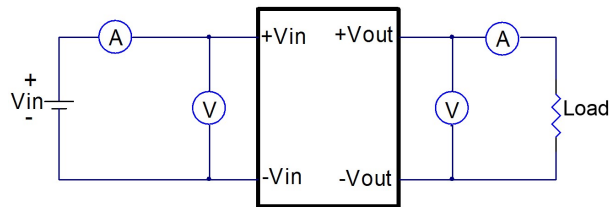
The value of line regulation is defined as:

$$Line\ reg. = \frac{V_{HL} - V_{LL}}{V_{LL}} \times 100\%$$

Where:

V_{HL} is the output voltage of maximum input voltage at full load

V_{LL} is the output voltage of minimum input voltage at full load



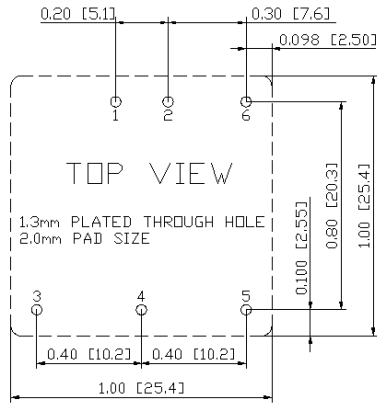
EC5SBW Series Test Setup

5. Recommend Layout, PCB Footprint and Soldering Information

The system designer or end user must ensure that metal and other components in the vicinity of the converter meet the spacing requirements for which the system is approved. Low resistance and inductance PCB layout traces are the norm and should be used where possible. Due consideration must also be given to proper low impedance tracks between power module, input and output grounds. The recommended footprints and soldering profiles are shown below.



EC5SBW Series Application Note V15

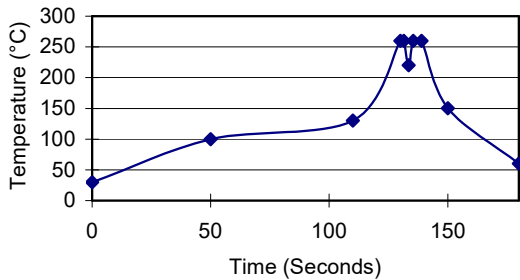


Note: Dimensions are in inches (millimeters)

Clean the soldered side of the module with a brush, prevent liquid from getting into the module. Do not clean by soaking the module into liquid. Do not allow solvent to come in contact with product labels or resin case as this may change the color of the resin case or cause deletion of the letters printed on the product label. After cleaning, dry the modules well.

The suggested soldering iron is $420 \pm 10^\circ\text{C}$ for up to 4~15seconds (less than 90W). Furthermore, the recommended soldering profile is shown below.

Lead Free Wave Soldering Profile



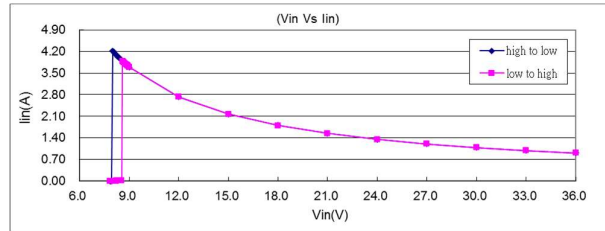
6. Features and Functions

6.1 UVLO (Under Voltage Lock Out)

Input under voltage lockout is standard on the EC5SBW series unit. The unit will shut down when the input voltage drops below a threshold, and the unit will operate when the input voltage goes above the upper threshold.

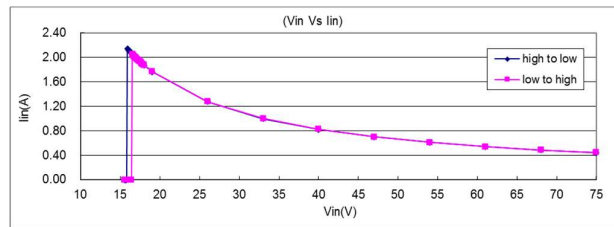
EC5SBW-24SXX

lin Vs Vin



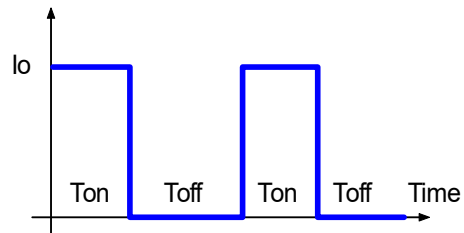
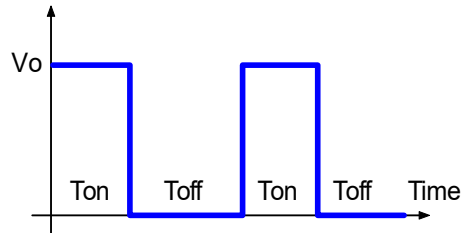
EC5SBW-48SXX

lin Vs Vin



6.2 Over Current / Short Circuit Protection

All models have internal over current and continuous short circuit protection. The unit operates normally once the fault condition is removed. At the point of current limit inception, the converter will go into hiccup mode protection.





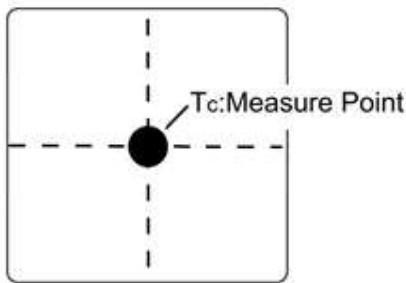
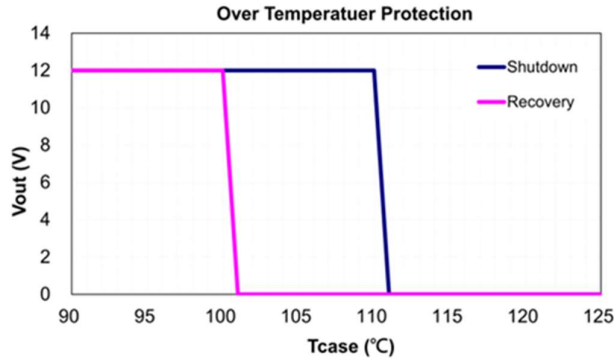
EC5SBW Series Application Note V15

6.3 Output Over Voltage Protection

The over-voltage protection consists of a zener diode to limiting the out voltage.

6.4 Over Temperature Protection

These modules have an over temperature protection circuit to safeguard against thermal damage. Shutdown occurs with the maximum case reference temperature is exceeded. The module will restart when the case temperature falls below over temperature recovery threshold. Different input voltage the over temperature protection turn on/off points will drift. Please measure temperature of the center part of metal case.



TOP VIEW

6.5 Remote On/Off

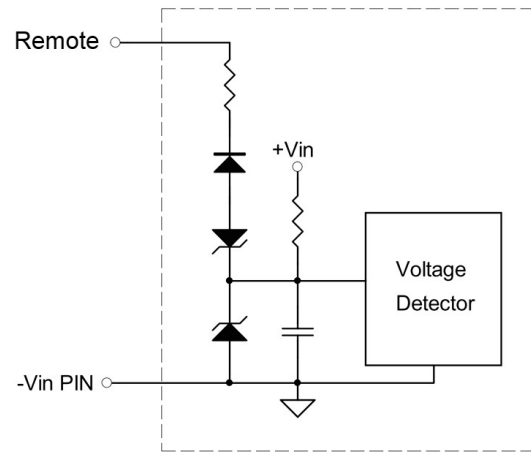
The EC5SBW series allows the user to switch the module on and off electronically with the remote on/off feature. All models are available in "positive logic" and "negative logic" (optional) versions. The converter turns on if the remote On/Off pin is high (>3.5Vdc to 75Vdc or open circuit). Setting the pin low (0 to <1.2Vdc, except M2 Series is 0 to <1.0Vdc) will turn the converter off. The signal level of the remote on/off input is defined with respect to ground.

If not using the remote on/off pin, leave the pin open (converter will be on). Converter will be turn on in positive mode.

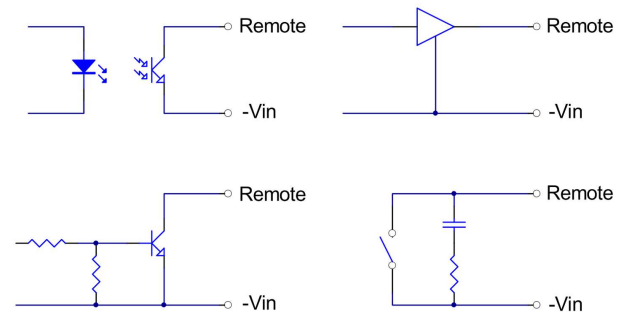
Models with part number suffix "N" are the "negative logic" remote on/off version. The unit turns off if the remote on/off pin is high (>3.5Vdc to 75Vdc or open circuit). The converter turns on if the On/Off pin input is low (0 to <1.2Vdc, except M2 Series is 0 to <1.0Vdc). Note that the converter is off by default.

Logic State (Pin 6)	Negative Logic	Positive Logic
Logic Low	Module on	Module off
Logic High	Module off	Module on

The converter remote on/off circuit built-in on input side. The ground pin of input side remote on/off circuit is -vin pin. Inside connection sees below.



Connection examples see below.



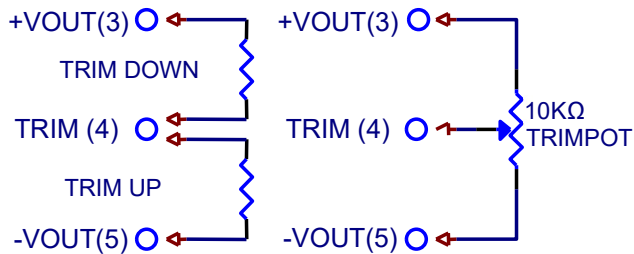
Remote On/Off Connection Examples



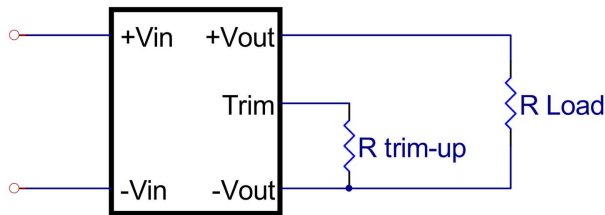
EC5SBW Series Application Note V15

6.6 Output Voltage Adjustment

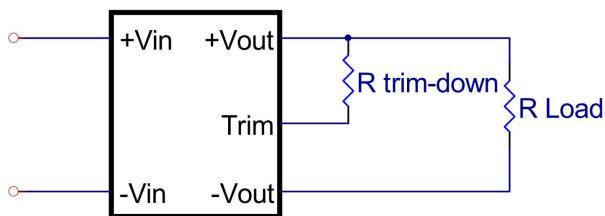
Output may be externally trimmed -10% to +10% (single output models only) with a fixed resistor or an external trim pot as shown (optional). Model specific formulas for calculating trim resistors are available upon request as a separate document.



In order to trim the voltage up or down, one needs to connect the trim resistor either between the trim pin and -Vout for trim-up or between trim pin and +Vout for trim-down. The output voltage trim range is -10% to +10%. This is shown:



Trim-up Voltage Setup



Trim-down Voltage Setup

1. The value of Rtrim-up defined as:

$$R_{trim-up} = \left(\frac{V_r \times R1 \times (R2 + R3)}{(V_o - V_{o,nom}) \times R2} \right) - R_t \text{ (K}\Omega\text{)}$$

Where

R_{trim-up} is the external resistor in Kohm.

V_{o,nom} is the nominal output voltage.

V_o is the desired output voltage.

R1, Rt, R2, R3 and Vr are internal to the unit and are defined in Table 1.

Table 1 – Trim up and Trim down Resistor Values

Model Number	Output Voltage(V)	R1 (KΩ)	R2 (KΩ)	R3 (KΩ)	Rt (KΩ)	Vr (V)
EC5SBW-24S33 EC5SBW-48S33	3.3	2.74	1.8	0.27	9.1	1.24
EC5SBW-24S05 EC5SBW-48S05	5.0	2.32	2.32	0	8.2	2.5
EC5SBW-24S12 EC5SBW-48S12	12.0	6.8	2.4	2.32	22	2.5
EC5SBW-24S15 EC5SBW-48S15	15.0	8.06	2.4	3.9	27	2.5

For example, to trim-up the output voltage of 5.0V module (EC5SBW-24S05) by 10% to 5.5V, R trim-up is calculated as follows:

$$V_o - V_{o,nom} = 5.5 - 5.0 = 0.5V$$

$$R1 = 2.32 \text{ K}\Omega$$

$$R2 = 2.32 \text{ K}\Omega$$

$$R3 = 0 \text{ K}\Omega$$

$$Rt = 8.2 \text{ K}\Omega$$

$$Vr = 2.5 \text{ V}$$

$$R_{trim-up} = \left(\frac{2.5 \times 2.32 \times (2.32 + 0)}{0.5 \times 2.32} \right) - 8.2 = 3.4(\text{K}\Omega)$$

The typical value of R_{trim-up}

Trim up %	3.3V	5V	12V	15V
	R _{trim-up} (KΩ)			
1%	109.301	107.800	256.611	325.625
2%	50.101	49.800	117.306	149.313
3%	30.367	30.467	70.870	90.542
4%	20.500	20.800	47.653	61.156
5%	14.580	15.000	33.722	43.525
6%	10.634	11.133	24.435	31.771
7%	7.814	8.371	17.802	23.375
8%	5.700	6.300	12.826	17.078
9%	4.056	4.689	8.957	12.181
10%	2.740	3.400	5.861	8.263

2. The value of R trim-down defined as:

$$R_{trim-down} = R1 \times \left(\frac{V_r \times R1}{(V_{o,nom} - V_o) \times R2} - 1 \right) - R_t \text{ (K}\Omega\text{)}$$

Where

R_{trim-down} is the external resistor in Kohm.

V_{o,nom} is the nominal output voltage.

V_o is the desired output voltage.

R1, Rt, R2, R3 and Vr are internal to the unit and are defined in Table 1.



EC5SBW Series Application Note V15

For example, to trim-down the output voltage of 5.0V module (EC5SBW-24S05) by 10% to 4.5V, R trim-down is calculated as follows:

$$V_{O,nom} - V_o = 5.0 - 4.5 = 0.5V$$

$$R1 = 2.32 K\Omega$$

$$R2 = 2.32 K\Omega$$

$$R3 = 0 K\Omega$$

$$Rt = 8.2 K\Omega$$

$$Vr = 2.5 V$$

$$R_{trim-down} = 2.32 \times \left(\frac{2.5 \times 2.32}{0.5 \times 2.32} - 1 \right) - 8.2 = 1.08 (K\Omega)$$

The typical value of R_{trim_down}

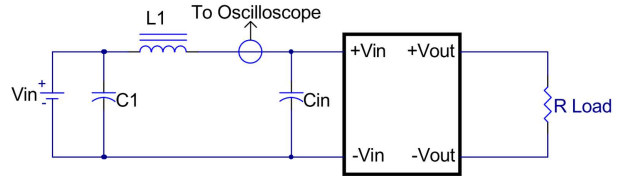
Trim down %	3.3V	5V	12V	15V
	$R_{trim_down} (K\Omega)$			
1%	144.884	105.480	372.589	416.076
2%	66.522	47.480	171.894	190.508
3%	40.401	28.147	104.996	115.319
4%	27.341	18.480	71.547	77.724
5%	19.505	12.680	51.478	55.167
6%	14.281	8.813	38.098	40.129
7%	10.549	6.051	28.541	29.388
8%	7.751	3.980	21.374	21.332
9%	5.574	2.369	15.799	15.066
10%	3.832	1.080	11.339	10.054

The EC5SBW series models is adjustable within the range of $\pm 10\%$, see input & output trim curves for trim up and trim down ranges.

7. Input / Output Considerations

7.1 Input Capacitance at the Power Module

The converters must be connected to low AC source impedance. To avoid problems with loop stability source inductance should be low. Also, the input capacitors (C_{in}) should be placed close to the converter input pins to decouple distribution inductance. However, the external input capacitors are chosen for suitable ripple handling capability. Low ESR capacitors are good choice. Circuit as shown as below represents typical measurement methods for reflected ripple current. $C1$ and $L1$ simulate a typical DC source impedance. The input reflected-ripple current is measured by current probe to oscilloscope with a simulated source Inductance ($L1$).

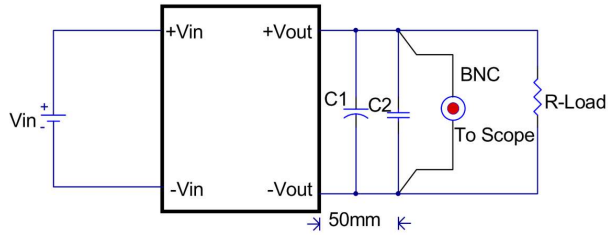


L1: 12uH

C1: 220uF ESR<0.1ohm @100KHz

Cin: 33uF ESR<0.7ohm @100KHz

7.2 Output Ripple and Noise

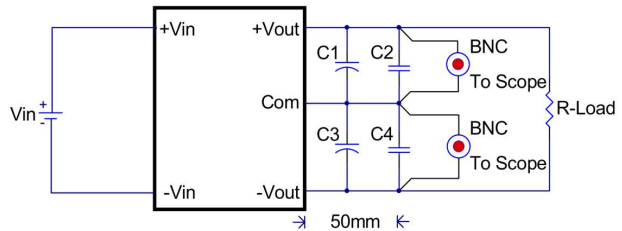


Note:

C1: 10uF tantalum capacitor

C2: 1uF ceramic capacitor

EC5SBW single output module



Note:

C1 & C3: 10uF tantalum capacitor

C2 & C4: 1uF ceramic capacitor.

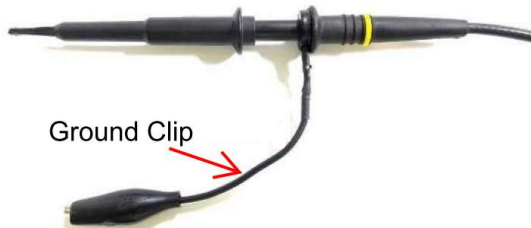
EC5SBW dual output module

Output ripple and noise measured with 10uF tantalum capacitor and 1uF ceramic capacitor across output, A 20 MHz bandwidth oscilloscope is normally used for the measurement.

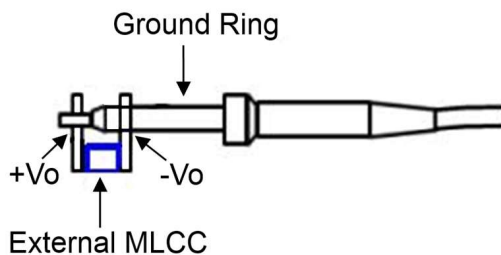


EC5SBW Series Application Note V15

The conventional ground clip on an oscilloscope probe should never be used in this kind of measurement. This clip, when placed in a field of radiated high frequency energy, acts as an antenna or inductive pickup loop, creating an extraneous voltage that is not part of the output noise of the converter.



Another method is shown in below, in case of coaxial-cable/BNC is not available. The noise pickup is eliminated by pressing scope probe ground ring directly against the -Vout terminal while the tip contacts the +Vout terminal. This makes the shortest possible connection across the output terminals.



7.3 Output Capacitance

The EC5SBW series converters provide unconditional stability with or without external capacitors. For good transient response, low ESR output capacitors should be located close to the point of load (<100mm). PCB design emphasizes low resistance and inductance tracks in consideration of high current applications. Output capacitors with their associated ESR values have an impact on loop stability and bandwidth. Cincon's converters are designed to work with load capacitance to see technical specifications.



EC5SBW Series Application Note V15

8. Thermal Design

8.1 Operating Temperature Range

The EC5SBW series converters can be operated within a wide case temperature range of -40°C to 105°C . Consideration must be given to the derating curves when ascertaining maximum power that can be drawn from the converter. The maximum power drawn from models is influenced by usual factors, such as:

- Input voltage range
- Output load current
- Forced air or natural convection
- Heat sink optional

8.2 Convection Requirements for Cooling

To predict the approximate cooling needed for the 1"×1" module, refer to the power derating curves in **section 8.4**. These derating curves are approximations of the ambient temperatures and airflows required to keep the power module temperature below its maximum rating. Once the module is assembled in the actual system, the module's temperature should be monitored to ensure it does not exceed 105°C as measured at the center of the top of the case (thus verifying proper cooling).

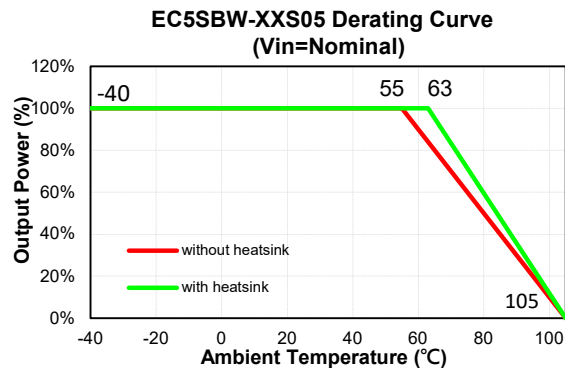
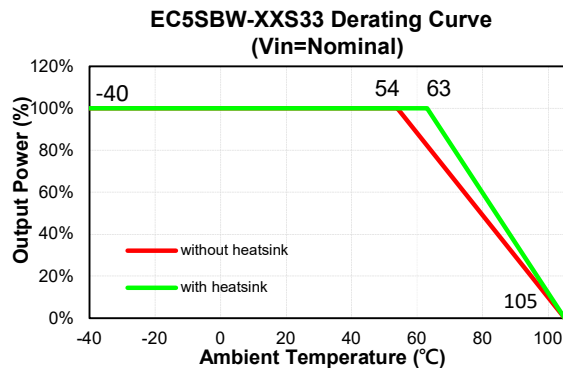
8.3 Thermal Considerations

The power module operates in a variety of thermal environments; however, sufficient cooling should be provided to help ensure reliable operation of the unit. Heat is removed by conduction, convection, and radiation to the surrounding environment. The example is presented in **section 8.4**. The power output of the module should not be allowed to exceed rated power ($V_{o_set} \times I_{o_max}$).

8.4 Power Derating

The operating case temperature range of EC5SBW series is -40°C to $+105^{\circ}\text{C}$. When operating the EC5SBW series, proper derating or cooling is needed. The maximum case temperature under any operating condition should not exceed 105°C .

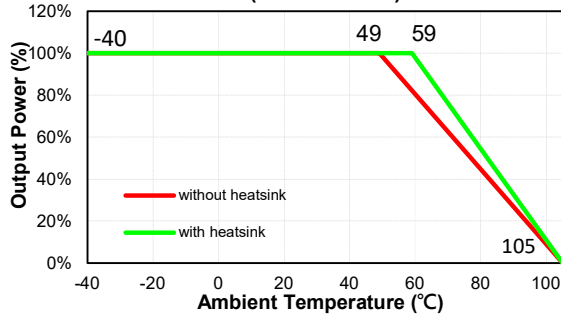
The following curve is the de-rating curve of EC5SBW series with heat sink.



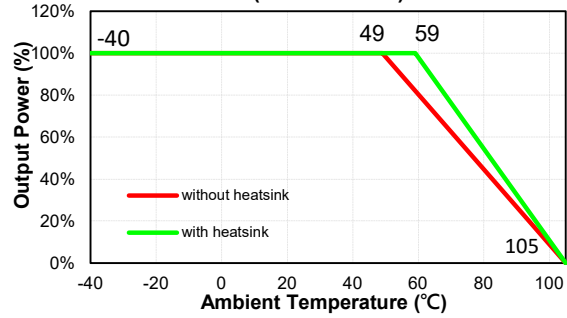


EC5SBW Series Application Note V15

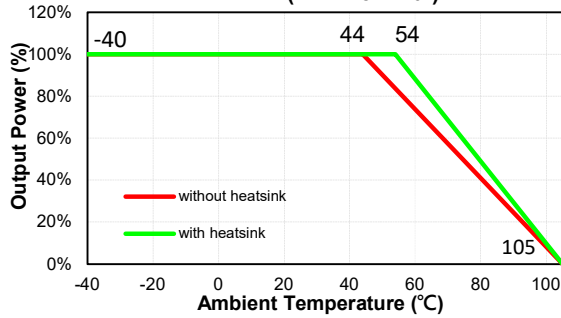
**EC5SBW-XXS12 Derating Curve
(Vin=Nominal)**



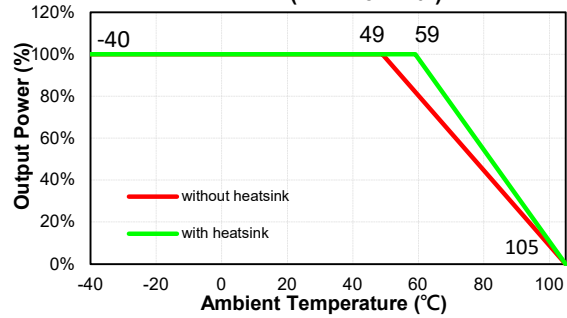
**EC5SBW-XXS15 Derating Curve
(Vin=Nominal)**



**EC5SBW-24D12, 24D15 Derating Curve
(Vin=Nominal)**



**EC5SBW-48D12, 48D15 Derating Curve
(Vin=Nominal)**





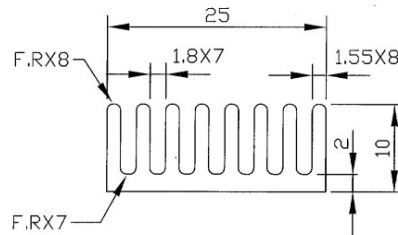
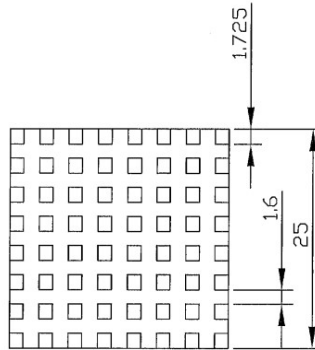
EC5SBW Series Application Note V15

8.5 1"x1" Case Heat Sinks Kit:

Cross Cut Heat Sink: SBC100 (K-C087)

All Dimensions in mm

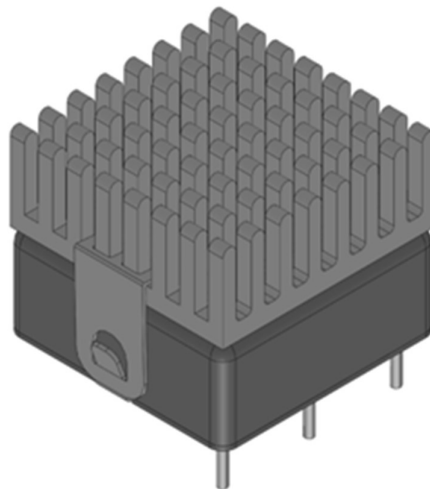
Rca: 12.5°C/W (typ.), at natural convection



Assembly:

Heat Sink: SBC100

Clip: HC01



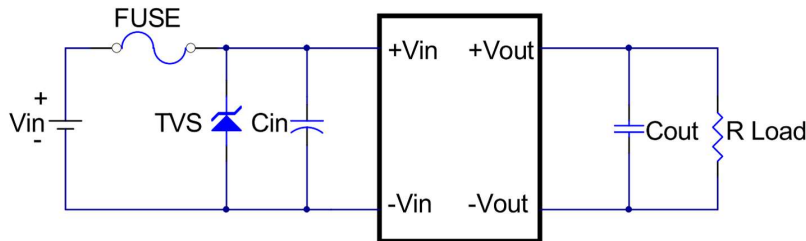


EC5SBW Series Application Note V15

9. Safety & EMC

9.1 Input Fusing and Safety Considerations

The EC5SBW series converters have no internal fuse. In order to achieve maximum safety and system protection, always use an input line fuse. We recommended a fast acting fuse 6A for 24V_{in} models and 3A for 48V_{in} modules. It is recommended that the circuit have a transient voltage suppressor diode (TVS) across the input terminal to protect the unit against surge or spike voltage and input reverse voltage (as shown).



The external input capacitor (C_{in}) and transient voltage suppressor diode (TVS) are required if EC5SBWseries has to meet EN61000-4-4, EN61000-4-5.

The C_{in} recommended a 10uF/100V (Nippon Chemi-Con KY series) aluminum capacitor. And the TVS recommended SMDJ40CA for 24V_{in} models, and SMDJ78A for 48V_{in} models.

9.2 EMC Considerations

EMI Test standard: EN55022 Conducted & Radiated Emission.

Test Condition: Input Voltage: Nominal Input, Output Load: Full Load

(1) EMI meet EN55032 / EN55022

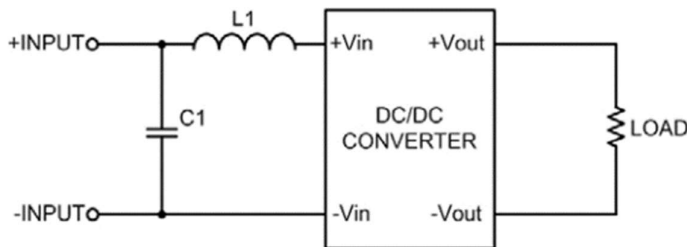


Figure 11. Connection circuit for conducted EMI testing

EN55022 class A					
Model No.	C1	L1	Model No.	C1	L1
EC5SBW-24S33	100uF/50V	0.47uH	EC5SBW-48S33	47uF/100V	2.2uH
EC5SBW-24S05	100uF/50V	0.47uH	EC5SBW-48S05	47uF/100V	2.2uH
EC5SBW-24S12	100uF/50V	0.47uH	EC5SBW-48S12	47uF/100V	2.2uH
EC5SBW-24S15	100uF/50V	0.47uH	EC5SBW-48S15	47uF/100V	2.2uH
EC5SBW-24D12	100uF/50V	0.47uH	EC5SBW-48D12	47uF/100V	2.2uH
EC5SBW-24D15	100uF/50V	0.47uH	EC5SBW-48D15	47uF/100V	2.2uH

Note:

C1: CHEMI-CON KMF aluminum capacitors.

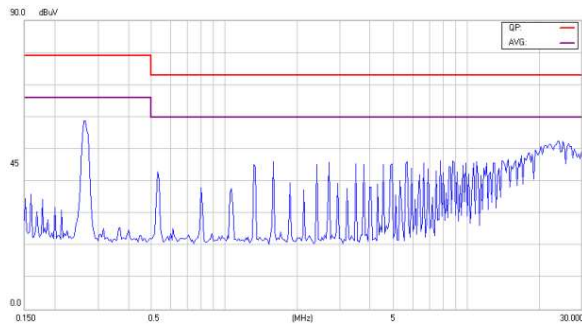
L1: 0.47uH and 2.2uH SMD 2525CZ VISHAY or equal.



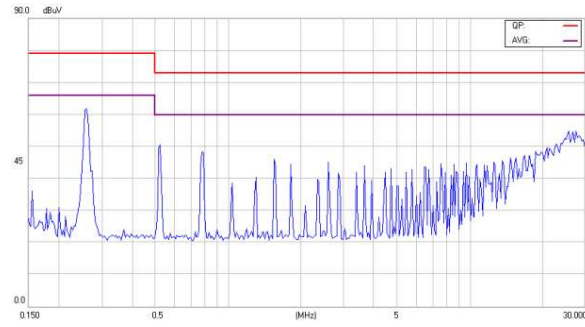
EC5SBW Series Application Note V15

Conducted Emission Class A:

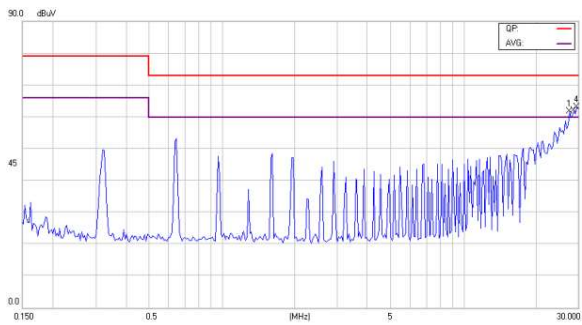
EC5SBW-24S33



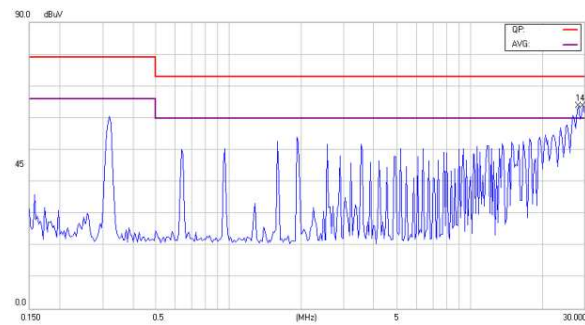
EC5SBW-24S05



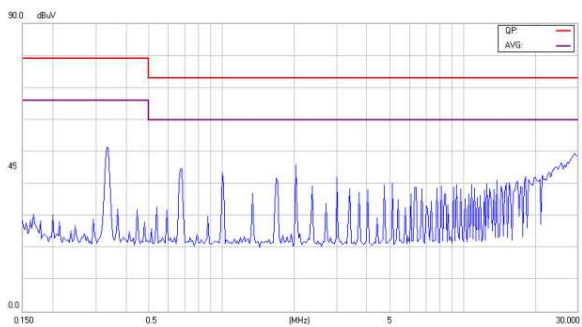
EC5SBW-24S12



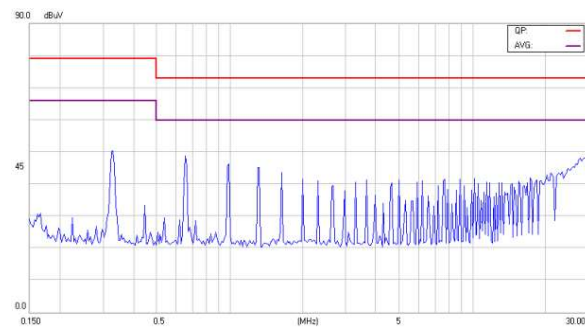
EC5SBW-24S15



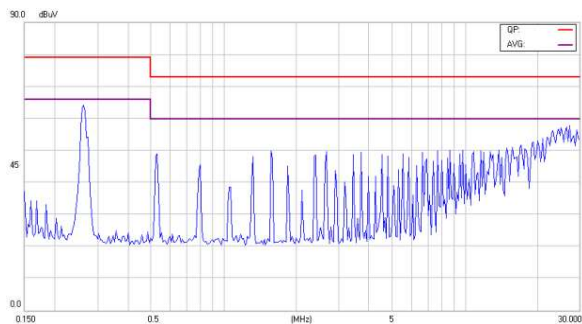
EC5SBW-24D12



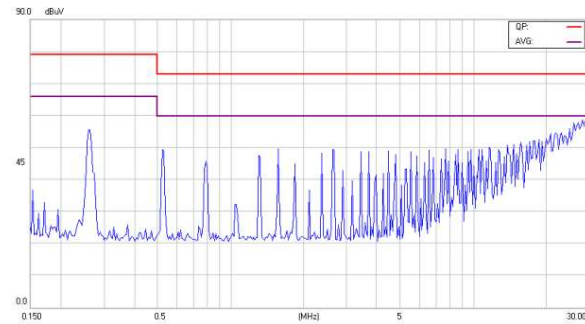
EC5SBW-24D15



EC5SBW-48S33



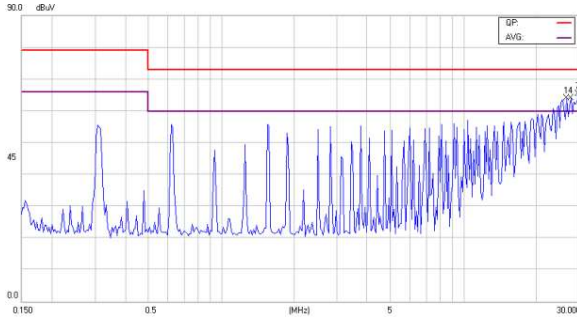
EC5SBW-48S05



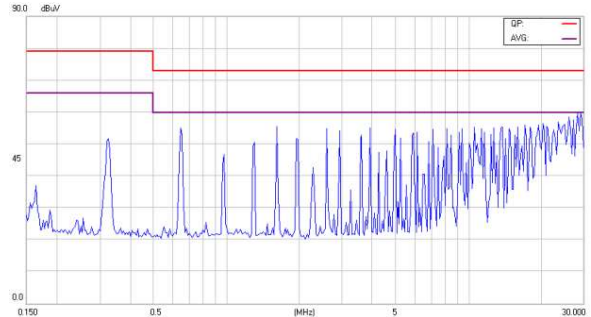


EC5SBW Series Application Note V15

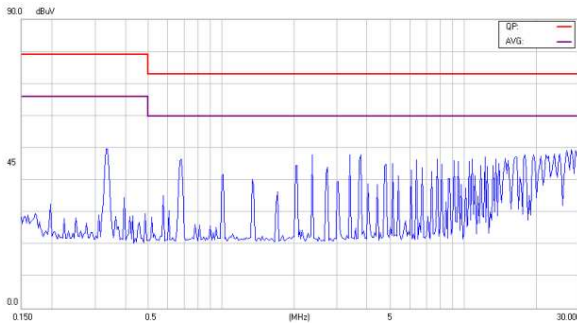
EC5SBW-48S12



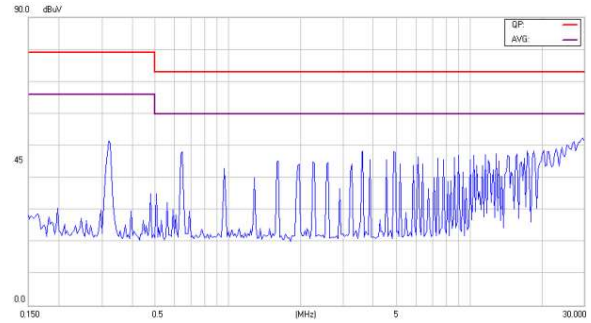
EC5SBW-48S15



EC5SBW-48D12



EC5SBW-48D15



Headquarters:

14F, No.306, Sec.4, Hsin Yi Rd.
Taipei, Taiwan
Tel: 886-2-27086210
Fax: 886-2-27029852
E-mail: sales@cincon.com.tw
Web Site: <https://www.cincon.com>

CINCON ELECTRONICS CO., LTD.

Factory:

No. 8-1, Fu Kung Rd.
Fu Hsing Industrial Park
Fu Hsing Hsiang,
ChangHua Hsien, Taiwan
Tel: 886-4-7690261
Fax: 886-4-7698031

Cincon North America:

1655Mesa Verde Ave. Ste 180
Ventura, CA93003
Tel: 805-639-3350
Fax: 805-639-4101
E-mail: info@cincon.com