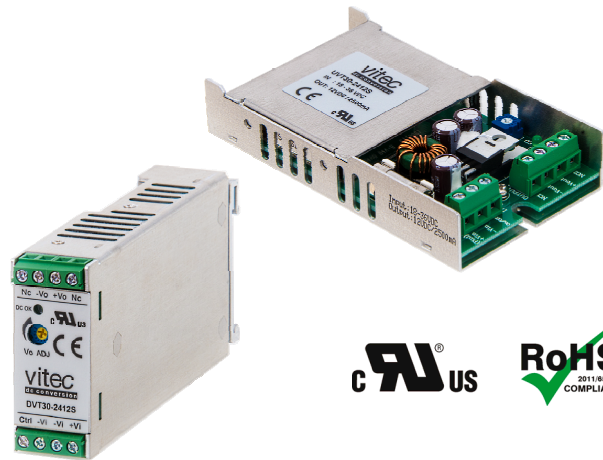


FEATURES AND APPLICATIONS

- 4:1 Input Range
- High Efficiency up to 87%
- U-Channel or DIN Rail Chassis
- Low Ripple & Noise
- Screw Terminals for Input & Output
- UL60950-1 certified
- RoHS ✓



GENERAL DESCRIPTION

The UVTW15 and DVTW15 series is a family of 15 Watt single and dual output DC-DC converters. These converters were designed as DC/DC Plug-in solution and are available in U-Channel chassis (UVTW15), or DIN rail chassis (DVTW15; Reliable snap-on for DIN rail TS-35/7.5 or TS-35/15). These devices offering high performance features such as 1500 Vdc input/output isolation voltage, continuous short circuit protection with automatic restart and tight line and load regulation. Further features are internal input fuse protection, internal reverse polarity protection, internal input in-rush current limit circuit, over voltage protection and Output DC-OK LED indicator.

Models operate from a 4:1 input bus voltage of 24 and 48 Vdc offering output voltage levels of 3.3, 5, 5.1, 12, 15, ± 5 , ± 12 and ± 15 Vdc. Cooling is by free-air convection.

4:1 Input – Single and Dual Outputs

Type Number	Input Voltage [Vdc]	Output Voltage [Vdc]	Output Current Full load [mA]	Input Current No load [mA] 24/48	Input Current Full load [mA] 24/48	Output Ripple & Noise [mVpp]	Efficiency [%] 24/48	max. Cap. Load [μ F]
xVTW15-yy3R3S	24 48	3.3	4500	52/37	773/387	50	85/85	14700
xVTW15-yy05S		5.0	3000	67/38	772/381	50	86/87	7200
xVTW15-yy5R1S		5.1	3000	67/38	787/389	50	86/87	7200
xVTW15-yy12S		12.0	1275	26/18	772/386	75	86/86	1250
xVTW15-yy15S		15.0	1000	26/18	772/386	75	86/86	800
xVTW15-yy12D		± 5.0	± 1500	57/37	772/381	75	86/87	± 3600
xVTW15-yy12D		± 12.0	± 625	35/20	762/381	75	87/87	± 625
xVTW15-yy15D		± 15.0	± 500	35/20	762/381	75	87/87	± 400

x ... Chassis:

U ... U-Channel Chassis
D ... DIN Rail Chassis

Options UVTW15-Series (U-Channel Chassis):

Suffix N Remote On/Off - Negative Logic
Suffix -DR UVTW15 with DIN rail clip for DIN35

yy ... nominal input voltage:

xVTW15-Series: 24 (9.5 – 36 Vdc)
48 (18 – 75 Vdc)

Options DVTW15-Series (DIN Rail Chassis):

Suffix N Remote On/Off - Negative Logic

e.g. UVTW15-2405S
UVTW15-483R3S-DR
DVTW15-2412D

(U-Channel Chassis, Input 24 Vdc, Output 5 Vdc)
(U-Channel Chassis, Input 48 Vdc, Output 3.3 Vdc, DIN rail clip option)
(DIN rail Chassis, 24 Vdc input, ± 12 Vdc dual output)

V i t e c POWER GmbH

Hans Kudlich Gasse 12/3, A-2230 Gänserndorf, Austria, Tel.: +43/2282/3144, Fax.: +43/2282/60494, Email: office@vitecpower.com

www.vitecpower.com

ELECTRICAL SPECIFICATIONS

Specifications typical at +25°C, nominal Input voltage, rated output current unless otherwise specified.

Input Specifications

Input Voltage Range	24V: 9.5 to 36 Vdc		
	48V: 18 to 75 Vdc		
Input Fuse (slow blow)	24V: 6 A		
	48V: 4 A		
Input Surge Voltage	24V: 50 Vdc, 100 ms, max.		
	48V: 100 Vdc, 100 ms, max.		
In-Rush Current	15 A		
Input Reflected Ripple Current	10 mApp		
Start Up time (nom. input, const. res. load)	100 ms		
Start-Up/Shutdown Voltage	Startup	Shutdown	
	24V: 9.5 Vdc	7.5 Vdc	
	48V: 18 Vdc	15 Vdc	

Output Specifications

Output Power	15 Watts, max.
Output Voltage Accuracy	±1.2%
	±2.2% (3.3 Vout)
Min. Load for specified regulation	0%
Ripple and Noise (20 MHz BW)	see table
Line Voltage Regulation	±0.2% (Single)
(LL to HL at full load)	±0.5% (Dual)
Load Voltage Regulation	±1.0%
(Min. load to full load)	±1.5% (3.3 Vout)
Cross Regulation (Dual)	±5.0% (Asym. load 25%/100% FL)
Temperature Coefficient	±0.02%/°C, max.
Over Load Protection	150% (of FL at nominal input)
Short Circuit Protection	Continuous (Hiccup)
Over Voltage Protection	3.3 Vout: 3.9 Vdc 12 Vout: 15 Vdc
	5 Vout: 6.2 Vdc 15 Vout: 18 Vdc
Transient response recovery time	250 µsec (25% load step change)
Output Indicator	Green LED

Remote ON/OFF Control

Control Voltage referenced to negative (-) input	
Positive Logic (Standard)	ON-Control: 3 to 12 V or open
	OFF-Control: 0 to 1.2 V or short
Negative Logic (Suffix N)	ON-Control: 0 to 1.2 V or short
	OFF-Control: 3 to 12 V or open
Input current of remote control pin	-0.5 mA to +0.5 mA, max.
Remote off input current	2.5 mA

General Specifications

Efficiency	see table
Switching Frequency	400 kHz, ±10%
Isolation Voltage	1500 Vdc, min. (1 minute)
Isolation Resistance	10 ⁹ Ohms, min.
Isolation Capacitance	4000 pF, max.
Approvals	UL60950-1 certified (E352836) IEC/EN60950-1 (designed to meet)

Physical Characteristics

Dimensions	U-channel: 101.6 x 57.2 x 19.1 mm
	4.00 x 2.25 x 0.75 inches
	DIN rail: 125.0 x 57.6 x 24.5 mm
	4.92 x 2.27 x 0.97 inches
Chassis Material	Aluminium
Weight	U-channel: 89 g
	DIN rail mounting: 148 g

Environmental Specification

Operating Temperature	
Case mounting:	-40°C to +83°C without Derating +83°C to 93°C with Derating
DIN rail mounting:	-40°C to +85°C without Derating +85°C to 95°C with Derating
Storage Temperature	-40°C to +105°C
Cooling	Free-air Convection
MTBF	MIL-HDBK-217F: 9.197 x 10 ⁵ Hrs *
	Bellcore TR-NWT-000332: 1.289 x 10 ⁶ Hrs **
	* Notice2 @25°C, FL, Ground, Benign, controlled environment
	** Case1, 50% Stress, 40°C
Thermal Shock	MIL-STD-810F
Vibration	MIL-STD-810F
Relative Humidity	5% to 95% RH

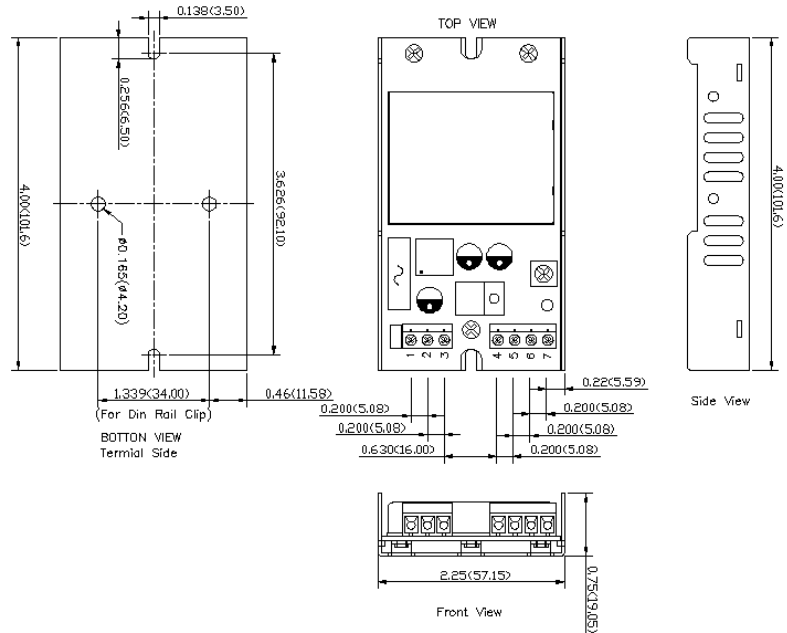
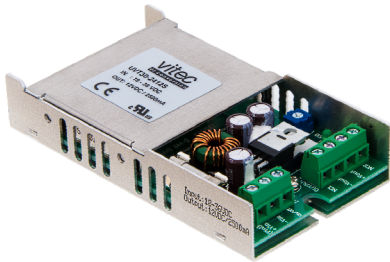
EMC Characteristics

EMI	EN55022	Class B
ESD	EN61000-4-2	Perf. Criteria A (Air ±8 kV; Contact ±6 kV)
Radiated Im.	EN61000-4-3	Perf. Criteria A (10 V/m)
F. Transients.	EN61000-4-4	Perf. Criteria A (±2 kV)
Surge	EN61000-4-5	Perf. Criteria A (±0.5 kV)
Conducted I.	EN61000-4-6	Perf. Criteria A (10 Vrms)

CAUTION: This power module is not internally fused. An input line fuse must always be used!

Drawings & PIN Connections

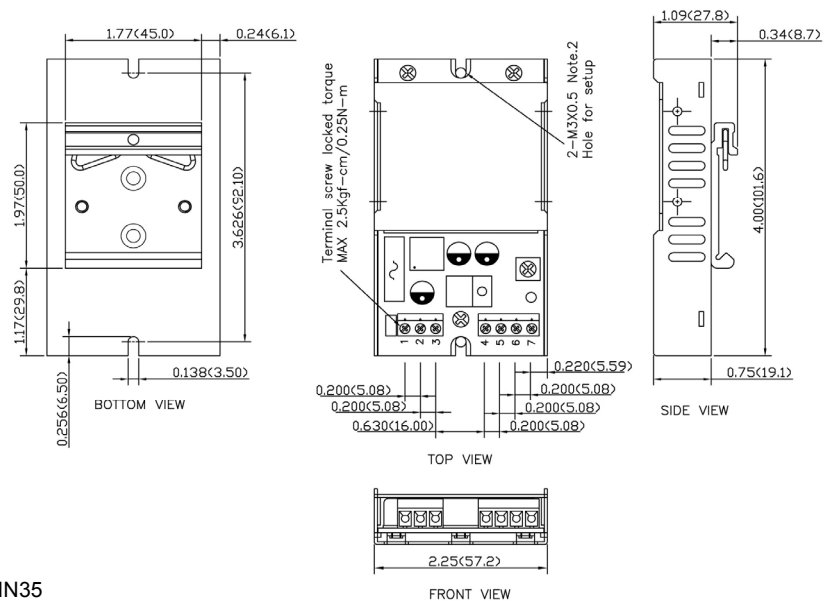
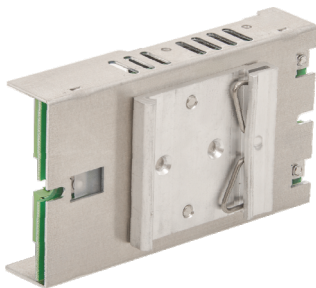
UVTW15 Series (U-Channel Version)



PIN Connections

Pin	Single	Dual
1	+V Input	+V Input
2	-V Input	-V Input
3	CTRL	CTRL
4	NC	NC
5	-V Output	-V Output
6	+V Output	Common
7	NC	+V Output

UVTW15 Series (U-Channel Version) with DIN Rail Mounting Clip Option



Options UVTW15-Series (U-Channel Chassis):

- Suffix -DR UVTW15 with DIN rail clip for DIN35
- Suffix N Remote On/Off - Negative Logic

Vitec POWER GmbH

Hans Kudlich Gasse 12/3, A-2230 Gänserndorf, Austria, Tel.: +43/2282/3144, Fax.: +43/2282/60494, Email: office@vitecpower.com

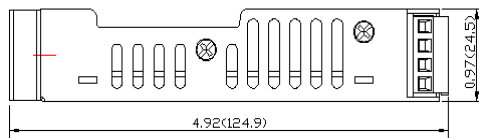
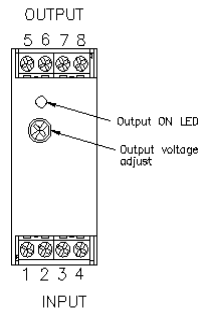
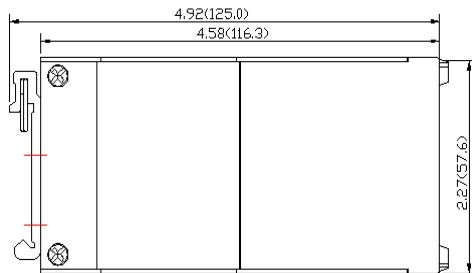
www.vitecpower.com

UVTW15 DVTW15 SERIES

15 Watt DC/DC Converter
Single and Dual Output
1500 Vdc Isolation



DVTW15 Series – DIN Rail Chassis (Case protection meets IP20 / IEC60529)

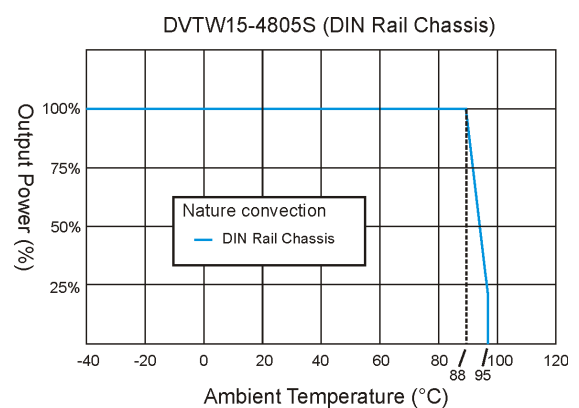
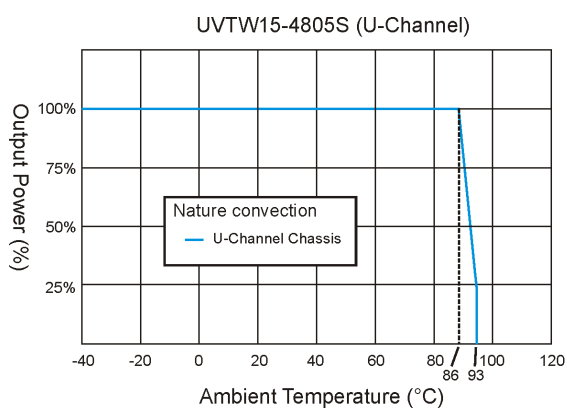


PIN Connections		
Pin	Single	Dual
1	CTRL	CTRL
2	-V Input	-V Input
3	-V Input	-V Input
4	+V Input	+V Input
5	NC	NC
6	-V Output	-V Output
7	+V Output	Common
8	NC	+V Output

NC ... not connected

Options DVTW15-Series (DIN Rail Chassis):
Suffix N Remote On/Off - Negative Logic

Derating



Notes: All dimensions in millimeters (inches). Tolerance $\pm 0.25\text{mm}$ (0.01).

Specifications can be changed without prior notice. Products are not intended for and must not be used in life support systems, human implantation, nuclear facilities or systems or any other application where product failure or malfunction of the component could lead to loss of life or catastrophic property damage.

V i t e c POWER GmbH

Hans Kudlich Gasse 12/3, A-2230 Gänserndorf, Austria, Tel.: +43/2282/3144, Fax.: +43/2282/60494, Email: office@vitecpower.com

www.vitecpower.com