

PFF1000

EMI FILTER



FEATURES

- MIL-STD-461C (CE03) and MIL-STD-461D (CE102) Compliance
- Less than 1.2 Vrms drop between Input & Output
- Does not require external components
- Meet environmental requirements of MIL-STD-801F and MIL-STD-901D
- For use with PFC1000 and PFC500 power factor correction products

HOW TO ORDER

PFF **1000**

Series

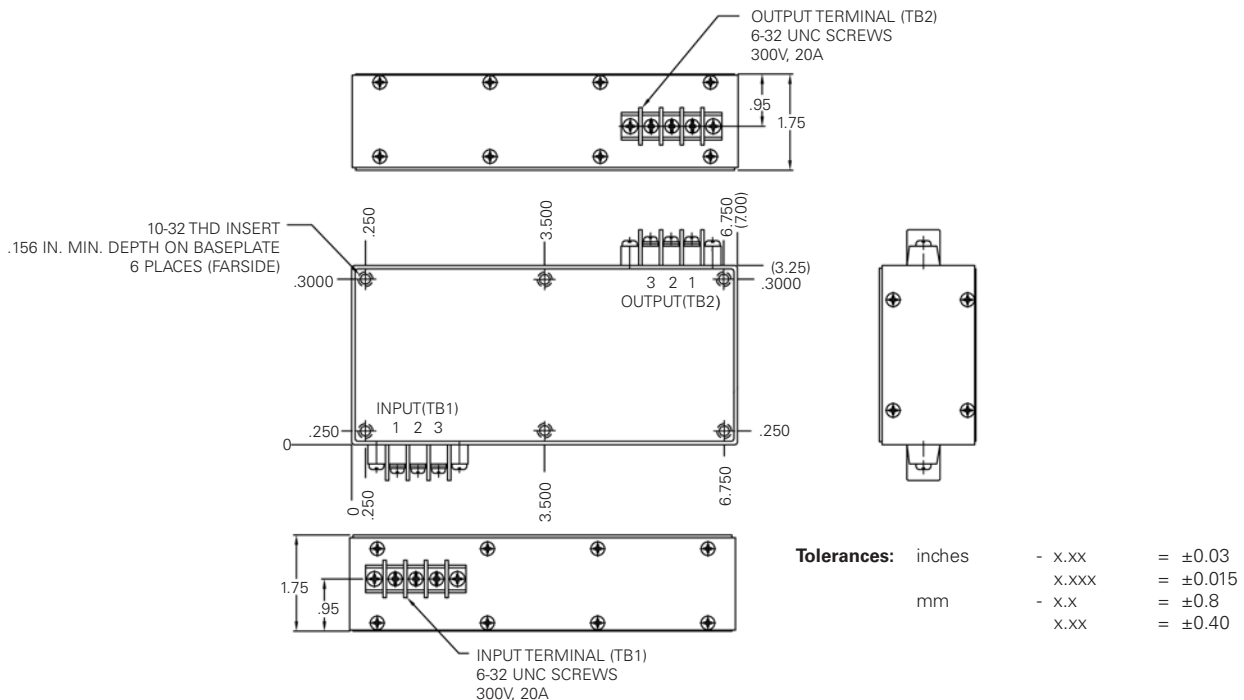
Total Output Power

SPECIFICATIONS

		Units
Input Voltage (Maximum)	265	Vrms
Rated Output Current	13	Arms
Isolation (Input/Output to case)	1000	Vac
Operating Temperature	-55 to +100	°C
Storage Temperature	-55 to +125	°C
Insulation Resistance (Minimum, measured @ 500Vdc)	100	Megohm

		Units
Weight	30.4	oz.
	860	grams
Size	7.0 x 3.25 x 1.75	inch
	17.8 x 8.3 x 4.5	cm
Volume	39.8	inch ³
	652.4	cm ³
Material	Case	Aluminum 5052-H32
	Baseplate	Aluminum Alloy
Finish		Black Anodized
Mounting	Standard	10-32 UNC inserts provided in baseplate

CASE DRAWINGS

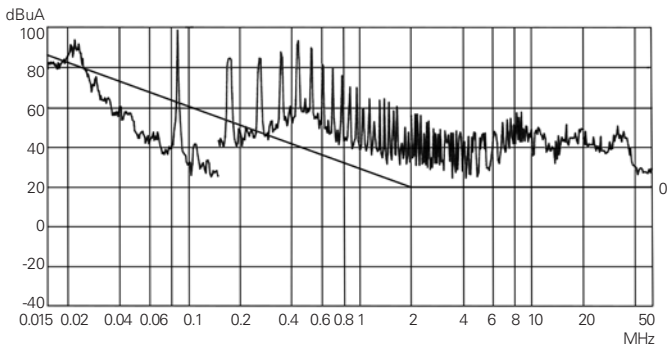


All specifications are typical @+25°C with nominal input voltage under full output load conditions, unless otherwise noted. Specifications subject to change without notice.

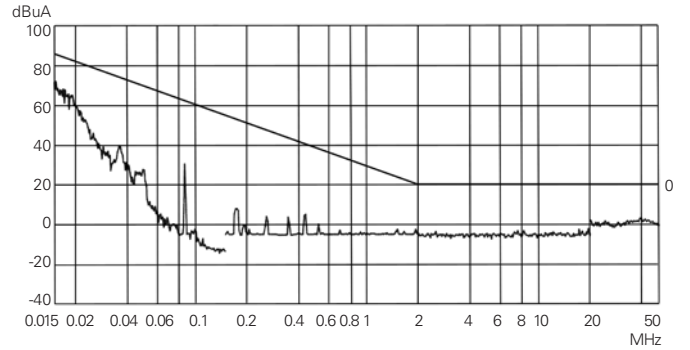
Martek Power Abbott, Inc. 2727 S. La Cienega Blvd, Los Angeles, CA 90034 USA Tel: (310) 202-8820 Fax: (310) 836-4926 <http://www.martekpowerabbott.com> sales.mpa@martekpower.com

MIL-STD-461C, CE03 (NARROW BAND)

115 Vrms, 60Hz, 1kW - Without PFF1000

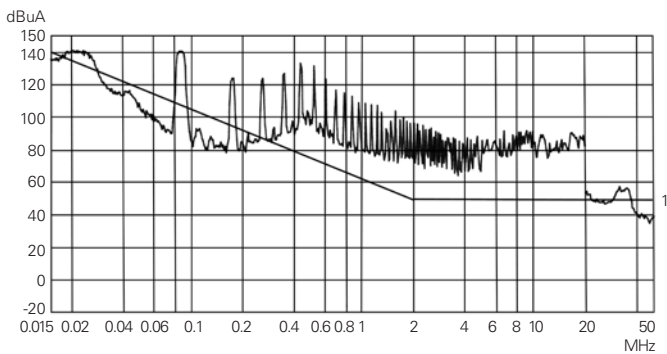


115 Vrms, 60Hz, 1kW - With PFF1000

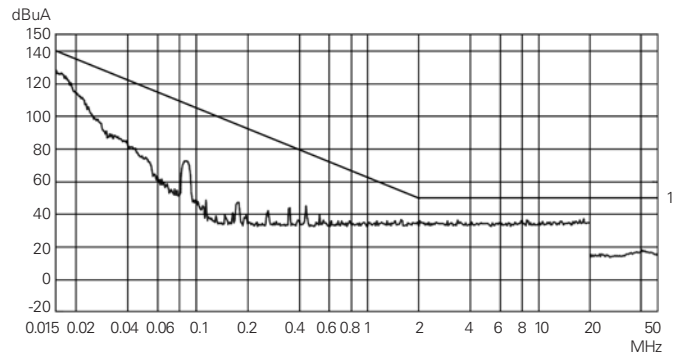


MIL-STD-461C, CE03 (BROAD BAND)

115 Vrms, 60Hz, 1kW - Without PFF1000

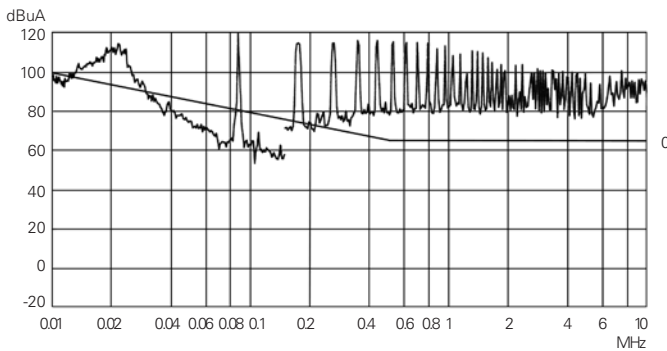


115 Vrms, 60Hz, 1kW - With PFF1000

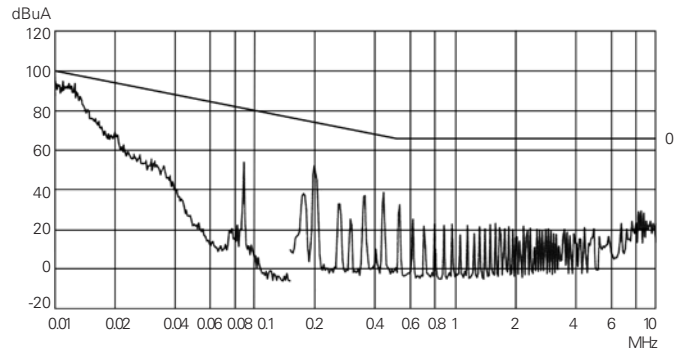


MIL-STD-461D, CE102

115 Vrms, 60Hz, 1kW - Without PFF1000



115 Vrms, 60Hz, 1kW - With PFF1000



All specifications are typical @+25°C with nominal input voltage under full output load conditions, unless otherwise noted. Specifications subject to change without notice.