

**Polishing Jig for F-SMA Connectors**

**1 General**

Assembled Plastic Optical Fibers have to be polished to achieve optimal attenuation values. The fibers are polished until the fiber end face is flush with the assembled connector. A hard and plain support plate (e. g. glass plate), an abrasive and a polishing jig is used for an appropriate fiber end face treatment. This polishing jig is suitable for F-SMA connectors acc. IEC 61754-22



Pic. 1 Polishing jig

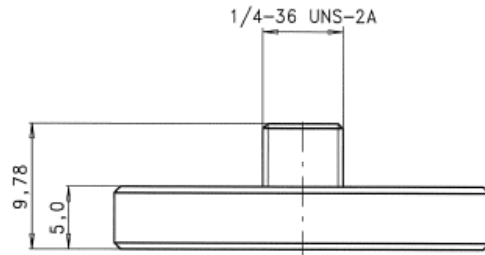
**2 Ordering Information**

Type	Order number
Polishing jig for F-SMA connectors	910PSSMA00001

**5 Dimensioned drawing**

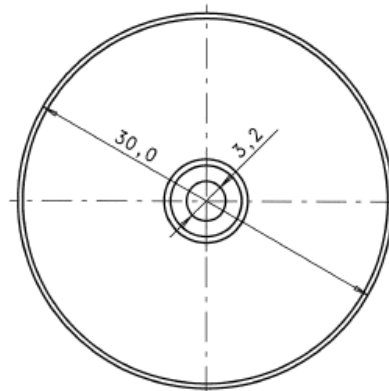
**3 Operating instruction**

Insert the connector fully into the polishing jig. Press the tool on the polish paper (grid P1000) and polish the fiber until the fiber is flush with the connector. Use a hard and plain support plate (e.g. glass plate).



**4 Technical Data**

Material:	Stainless steel
Dimensions:	d = 30mm
Jig height:	5mm
Weight:	28 g



Pic. 2 Drawing

The information released by Ratioplast-Optoelectronics GmbH in this data sheet is believed to be accurate and reliable. However, no responsibility is assumed by Ratioplast-Optoelectronics GmbH for its use. Ratioplast-Optoelectronics GmbH reserves the right to change circuitry and specifications at any time without notification to the customer.