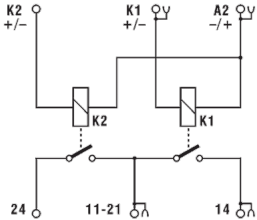
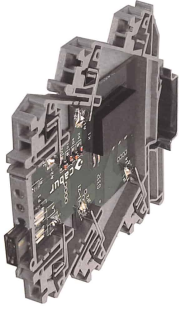
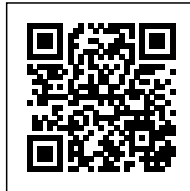


2 electromechanical relay 24Vac/dc SPST(NA) 5A, spring, not pluggable



Series	CKR
Code	XCKR25
Type	CKR25 (1)
INPUT TECHNICAL DATA	
Input rated voltage	24 Vac/dc $\pm 10\%$
Pull in / drop out voltage type	18 V / 1.2 V
Current consumption	13 mA $\pm 10\%$
Turn ON / OFF time	10 ms / 5 ms
Protection circuit	Free-wheel diode
Connection terminal	2.5 mm ² (spring)
Input channels	2 not pluggable
OUTPUT TECHNICAL DATA	
Contact type	SPST(NO), 1 Form A (NO), AgSnO ₂
Nominal current	5 A (250 Vac)
Continuous current	10 A
Connection type	
GENERAL TECHNICAL DATA	
Operating temperature range	-20...+60°C
Input / output isolation	3 kVac / 60 s
Protection degree	IP 00 / IP20 (3)
Overvoltage category / pollution degree	II / 2
Status indication	LED "Input"
Housing material	UL94V-0 plastic material
Dimensions (LxHxD)	6x91x100 mm
Approximate weight	43 g
Mounting information	on a rail, side by side
ACCESSORIES	
Mounting rail (IEC60715/TH35-7.5)	PR/3/AC, PR/3/AC/ZB, PR/3/AS, PR/3/AS/ZB
Marking tag	NU0851
End section	XCKPT
Plugin jumper	PTC/4/02 (2 poles); PTC/4/03 (3 poles); PTC/4/04 (4 poles); PTC/4/05 (5 poles); PTC/4/10 (10 poles); PTC/4/00 (42 poles)
APPROVALS AND MARKINGS	CE



DESCRIZIONE DEL PRODOTTO

CKR25 2 electromechanical relay 24Vac/dc SPST(NA) 5A, spring, not pluggable