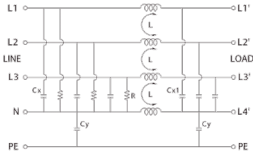
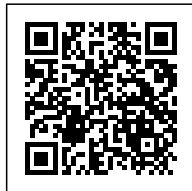


3-phase EMI filter with neutral 100A 440Vac



Series	TYT
Code	XF100TYT8
Type	F100TYT8 (1)
HS code	85363030
GENERAL TECHNICAL DATA	
Rated voltage	440 Vac \pm 10%
Continuous current	100 A
Leakage current	1.3 mA
Frequency	50...60 Hz
Operating temperature range	-25...+85°C
Isolation L / L	1.45 kVdc / 60 s (2)
Isolation L / PE	2.25 kVdc / 60 s (2)
Protection degree	IP 20
Connection terminal	fixed screw terminal blocks
Housing material	metallic
Dimensions (LxHxD)	162x252x132 mm
Approximate weight	
Mounting information	screw fixing, on metal panel
Common mode (L/PE) attenuation (dB)	
0.15 MHz	10
0.5 MHz	20
1 MHz	25
5 MHz	30
10 MHz	30
30 MHz	20
Differential mode (L/PE) attenuation (dB)	
0.15 MHz	30
0.5 MHz	40
1 MHz	40
5 MHz	35
10 MHz	35
30 MHz	25
ACCESSORIES	
APPROVALS AND MARKINGS	



* Models from 36 to 100 A* Elevated attenuation from 150 kHz to 30 MHz* Elevated attenuation even on long cables
1 (1) Produced on demand, contact our sales office for availability2 (2) Isolation test need to be made in DC voltage, according to EN 60950, cause by the internal filter capacitors.

DESCRIZIONE DEL PRODOTTO

F100TYT8
3-phase EMI filter with neutral 100A 440Vac